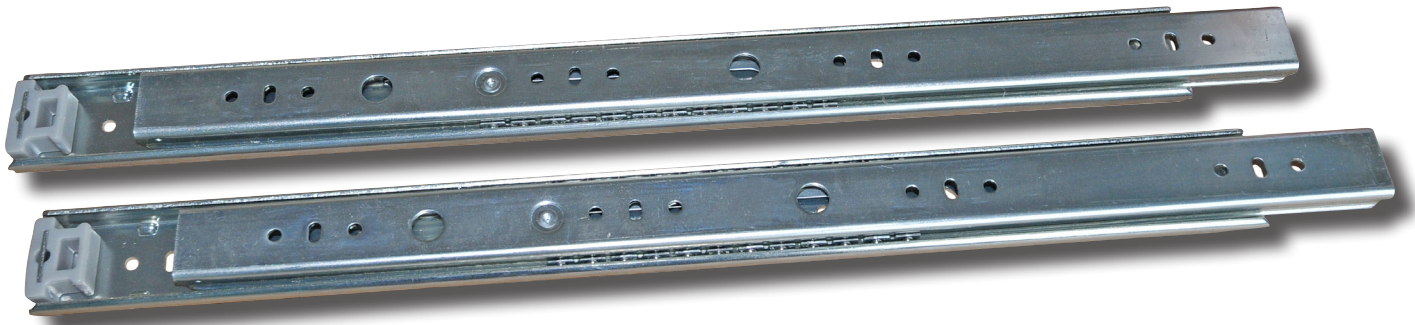
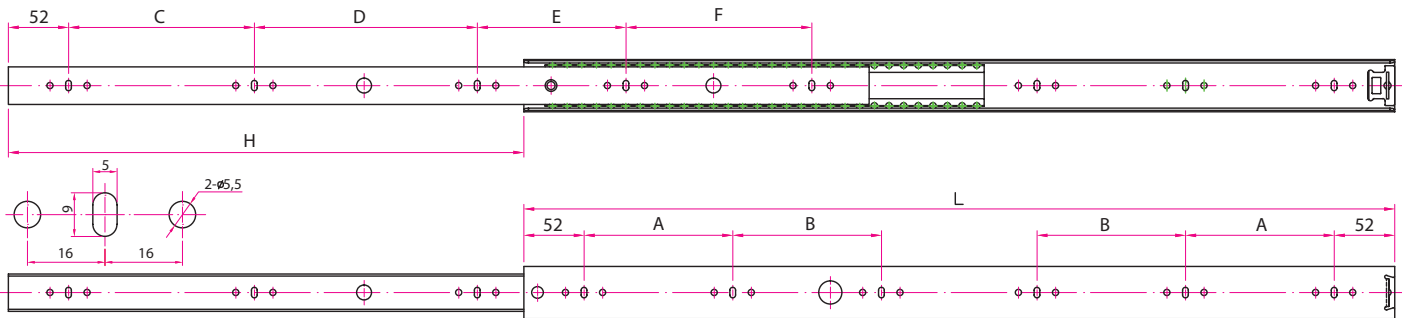
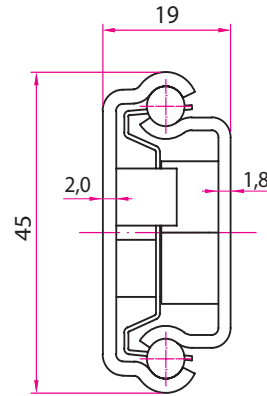


Technical specifications

- **Single extension sliding runners**
- Material: cold rolled steel
- Side mounting sliding runners
- Travel end rubber with stop function
- Finishing: bright zinc-coated
- Silent movement
- Sliding runners with carbon steel ball bearings



| CODE | L | H | A | B | C | D | E | F | Pair Kg. | Carton Kg. | Carton pair |
|--------|------|-----|-----|-----|-----|-----|-----|-----|----------|------------|-------------|
| 39500 | 500 | 320 | 128 | - | 128 | 128 | 128 | - | 1.70 | 20.40 | 12 |
| 39550 | 550 | 344 | 160 | - | 128 | 128 | 192 | - | 1.90 | 22.80 | 12 |
| 39600 | 600 | 369 | 160 | - | 128 | 160 | 192 | - | 2.10 | 25.20 | 12 |
| 39650 | 650 | 394 | 160 | - | 160 | 160 | 224 | - | 2.35 | 28.20 | 12 |
| 39700 | 700 | 419 | 128 | 128 | 160 | 192 | 224 | - | 2.50 | 15.00 | 6 |
| 39750 | 750 | 444 | 128 | 128 | 160 | 192 | 128 | 160 | 2.65 | 15.90 | 6 |
| 39800 | 800 | 468 | 128 | 128 | 160 | 192 | 160 | 160 | 2.85 | 17.10 | 6 |
| 39850 | 850 | 493 | 128 | 128 | 160 | 192 | 192 | 192 | 3.00 | 18.00 | 6 |
| 39900 | 900 | 518 | 160 | 128 | 192 | 192 | 192 | 192 | 3.20 | 19.20 | 6 |
| 39950 | 950 | 543 | 160 | 160 | 192 | 224 | 224 | 192 | 3.40 | 20.40 | 6 |
| 391000 | 1000 | 568 | 192 | 160 | 192 | 224 | 224 | 256 | 3.60 | 21.60 | 6 |